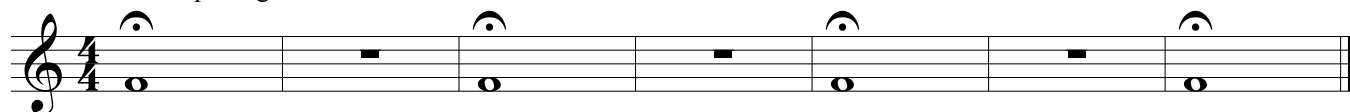


Trumpet Fundamentals Routine

Level 1

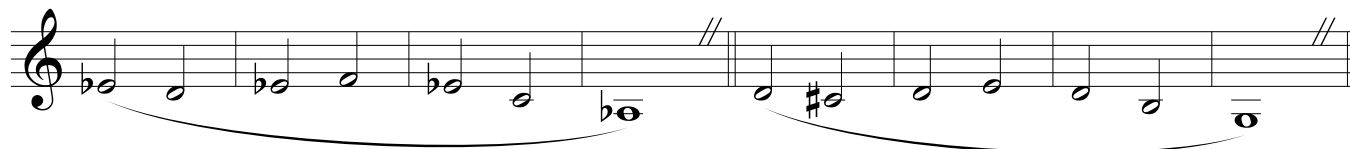
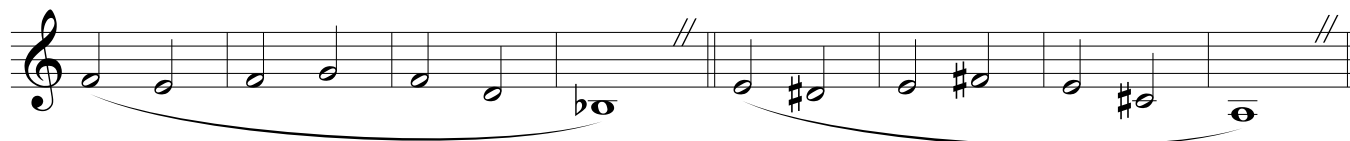
Buzzing the Leadpipe

To buzz the leadpipe, remove the tuning slide. On a Bb trumpet, the mouthpiece/leadpipe should resonate at approximately an F. Cornets will resonate at different pitches. The sound should be a resonant, reedy buzz. Repeat until you feel your embouchure responding to the breath in a relaxed manner.

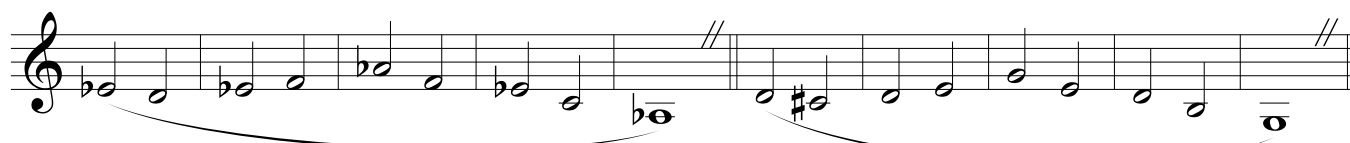
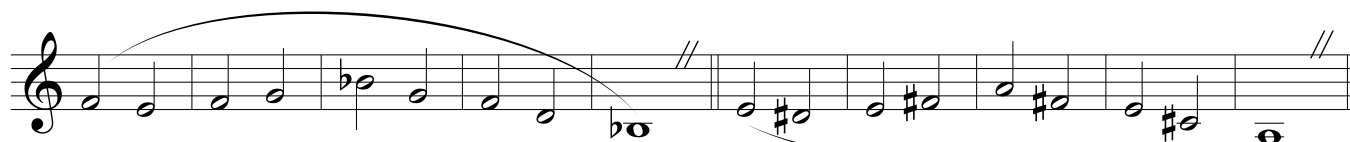


Flow Studies

Rest as long as you play & make sure you play each with a beautiful sound. Listen for breaks in the tone.



Slight pause



Lip Slurs

Each note must be flowing into the next one without hesitation. Think of a slight crescendo as you ascend.



Articulation/Tonguing

Repeat this as needed until you are comfortable and confident with your articulation.
Use both TOO and DOO syllables



Play 3X with "TOO" and 3X with "DOO"



"Pines of Rome" Variation



Expanding Scales/Range Development

The quality of sound must remain the same as you ascend. As with the Flow Studies, listen for breaks in the sound indicating a change in the air-stream. Only play as far as you can with consistent tone quality.

